

Nelson W Gilbreath
1123 Forest St
Carthage, Missouri



BACK TO CAMP FOR SUPPER

*Always feel you Canadians!
 you're a dazed soul on the
 Standa + his surely enjoyed
 tracking + working with you.
 Best of everything!*

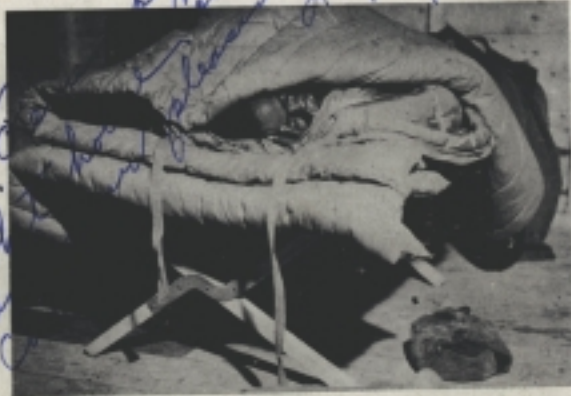
The Alaska Highway

**Boosted Road
 Before Start**

Betty Sheld
 608. 12th Ave N.

based for the Alaska highway long before it became a reality
 was Hon. James A. MacKinnon, Minister of Trade and Commerce in the Canadian Government.
 Here is what he has to say about The Road:

"The new road known as
 the Alaska Highway, now being
 constructed through Canadian
 territory under U.S. auspices and
 to be turned over to Canada on
 the conclusion of hostilities, opens
 tremendous possibilities of use-
 fulness, not only in wartime but
 in peacetime as well.



THE NIGHTS WERE FRIGID

"This project undoubtedly
 will stimulate to a very great
 extent the development of ad-
 jacent natural resources in the
 spheres of mining, lumbering,
 fishing and oil production. After
 the war, this road is bound to prove a magnet to tourists, making access to the most scenic portions
 of North America as well as to one of the world's most attractive big-game hunting areas.

"Of particular significance is the fact that the Alaska Highway will form an indispensable
 link in that great chain of connecting roads which constitute the master Pan-American highway, con-
 necting the two continents of this hemisphere.

"This system will be the longest and most strategic in the world.

"When the war is won and opportunities for long-distance motoring become once more
 available to large numbers of people, it will be possible to travel by car from points in the Yukon,
 and in Alaska to the most southerly communities of Latin America.

"This road will not only open up fresh avenues to trade and military co-operation, but also
 to international friendship and understanding. A reasonable discerning glance into the future will
 show that this same Alaska Highway is destined to form part of the land communications system which
 will follow the route of round-the-world airways. These airways will connect the larger centers
 in eastern Canada and U.S. through Edmonton to Alaska, Russia, Japan and the Far East."

**Road Links
 Many Ports**

The Road connects a number of airports which were under construction
 by Canadian authorities before the war. These airports were used for a commercial airline to Alaska
 by Yukon Southern Air Transport, Ltd.

I've enjoyed so much
knowing - hate to see
you go. Minnie Dardquist
394 Fuller Ave.
St. Paul, Ed. 6743



THE BEST EQUIPMENT WAS USED

Regards

Ralph Shurtz
Omaha, Neb.

(26)

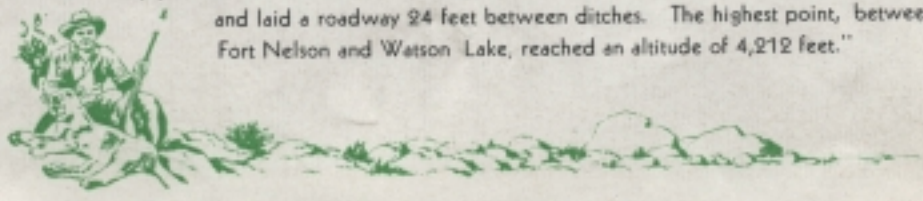
So what? -
 Rusty Bazarov
 James Dyer
 30 30 30
 At Point Barrow
The Alaska Highway



OFFICIAL OPENING, NOVEMBER 20th, 1942

Before the opening dedication ceremonies, War Secretary Stimson summed up the achievement of The Road in these words:

"Ten thousand soldiers divided into seven army engineer regiments and 6,000 civilian workmen under the direction of the Public Roads Administration completed the job in slightly more than six months. They pushed forward at the rate of eight miles a day, bridged 200 streams and rivers and laid a roadway 24 feet between ditches. The highest point, between Fort Nelson and Watson Lake, reached an altitude of 4,212 feet."





ROLLING HILLS, DENSELY WOODED

(28)